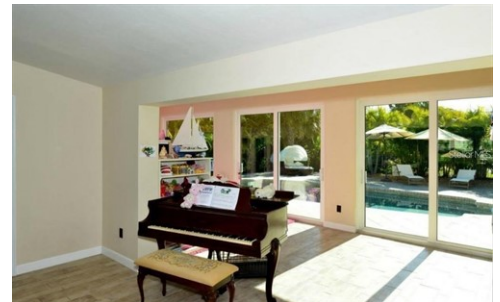




\$ 1,975,000



435 Partridge Cir, Sarasota, FL 34236

- » Beds: 3 | Baths: 2 Full, 1 Half
- » MLS #: A4630484
- » Single Family | 2,290 ft<sup>2</sup> | Lot: 12,632 ft<sup>2</sup>
- » More Info: [435PartridgeCirSarasota.IsForSale.com](http://435PartridgeCirSarasota.IsForSale.com)



Victoria Lear

941.350.1064

[victorialear@michaelsaunders.com](mailto:victorialear@michaelsaunders.com)

<http://victoriadumbaugh.michaelsaunders.com>

**Michael Saunders & Company**

LICENSED REAL ESTATE BROKER

Sales Office

1605 Main Street

Sarasota, FL 34236

(941) 951-6660

#### Remarks

Dramatic, light filled, contemporary, home with a seamless connection between the indoor and outdoor space. Beautifully renovated with soaring ceilings, tile planks that mimic wood, impact glass sliding doors, brick pavers, new plumbing and electric. Details abound and attention to craftsmanship is evident at every turn. Artistic touches make this home one of a kind. Open spacious Great Room opens onto Family Room with the tropical inviting pool area beyond. Fencing and landscaping create a true sense of privacy. Elegant and peaceful colors are predominant. Located on spectacular Bird Key, midway between Lido Beach, St. Armands Circle and Downtown.

